

# Tamper-Evident Labels



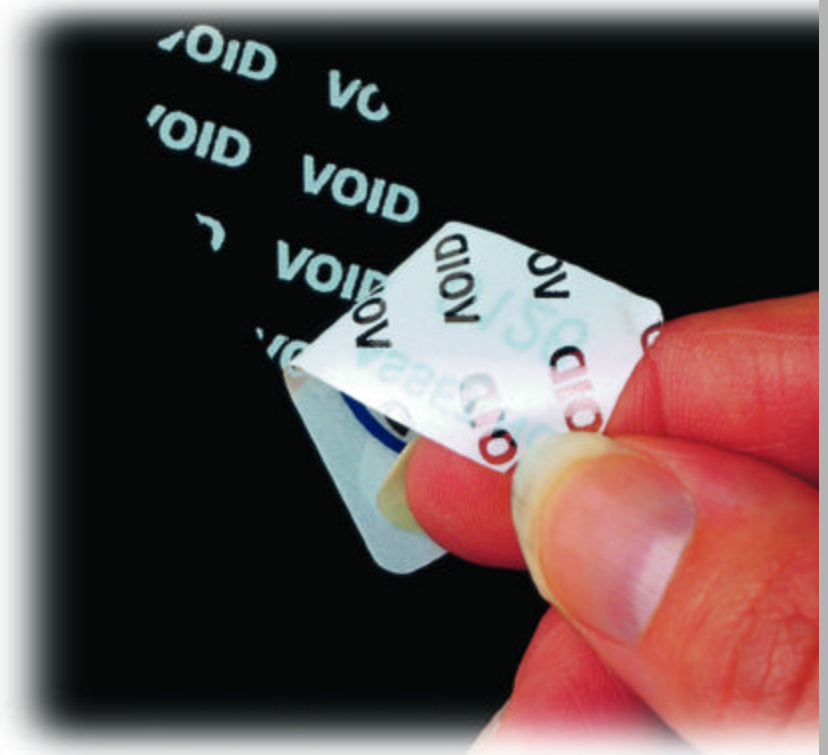
Do your assets have a habit of disappearing?

Discourage theft and keep your property in tact with our Tamper-Evident Labels. If someone attempts to remove the label the word "VOID" is left behind on the surface of the asset and the back of the label. Add a bar code and/or human readable number to the label and use it as part of an overall asset tracking system.

Use these labels to make a statement about your company or school by displaying a logo or stylized type in any of our standard colors (black, red, yellow, green or blue). Custom spot colors and four-color process are also available at an additional charge. The digital printing process used to produce these labels ensures even the most detailed logo will look crisp and clean while the gloss laminate featured with this product protects the label from mild to moderate cleaning and abrasion.

## Key Product Features

- Nontransferable properties protect assets by leaving "VOID" on application surface and label
- Digital printing process ensures bar code readability as well as crisp, clean company logos
- Durable polyester material easily conforms to uneven or radius surfaces
- .001" gloss laminate protects bar code and copy from mild to moderate cleanings, solvents, caustics, acids and abrasion



Data Support, Inc.  
95 New Clarkstown Rd.  
Nanuet, NY 10954

800.344.4332  
info@barcodebook.com  
www.barcodebook.com

# Tamper-Evident Labels Specifications

**Material:** .002" thick tamper-evident polyester with protective laminate. This product can withstand temperatures up to 200°F for short durations.

**Serialization:** Bar code and human-readable equivalent is produced using the latest high-resolution digital technology available, which provides excellent clarity and easy scanning. Code 39 is the standard symbology with a range of 2.7 to 9.4 CPI (characters per inch). Optional symbologies include Code 128, I 2 of 5 and 2D DataMatrix.

This product is also available with human-readable numbers only or with straight copy.

**Label Copy:** The label copy may include block type, stylized type, logos or other designs.

**Colors:** Standard colors include black, red, yellow, green or blue. Custom spot colors also available for an additional charge. Due to contrast needed for the bar code scanner, all bar codes are black.



## Standard Sizes:

No. 019: 2" x 1"	No. 033: 1 1/2" x 3/4"
No. 191: 2" x 5/8"	No. 277: 2" x 3/4"
No. 029: 1 3/4" x 5/8"	No. 123: 1 3/4" x 1/2"
No. 254: 1 1/4" x 1/2"	No. 694: 2 3/4" x 1 1/4"

**Adhesive:** .0015" tamper-evident adhesive leaves "VOID" on application surface and label.

**Packaging:** Shipped on convenient rolls with scrap matrix removed for ease of removal. Cleaning solution is provided to assist in applying to a clean surface. Cartons are clearly marked to indicate serial numbers of labels.

**Shipment:** 8 work days upon receipt of order and proof approval.

Data Support, Inc.  
95 New Clarkstown Rd.  
Nanuet, NY 10954

800.344.4332  
info@barcodebook.com  
www.barcodebook.com